

Reference:
Version:
Author: WCO
Date: 07-03-2006



WCO Data Model Version 2

UMM Class Diagrams, Version 2, 07-03-2006

Copyright © 2006 World Customs Organization.

WCO grants the non-exclusive and royalty-free licence to copy, multiply, distribute, and perform this work and to make derivative works.

This restricted copyright does not allow the reproduction of this work or parts thereof for publication in whatever form for commercial purposes

For any reuse or distribution, the licence terms of this work must be copied into the copies or derived work.

Requests and inquiries concerning the restricted copyright should be addressed to copyright@wcoomd.org.

Contents

1. GENERAL DESIGN	5
1. Description	5
2. Essential elements of this design	20
3. "AdditionalDocument" class	21
4. "AdditionalInformation" class	21
5. "Address" class	22
6. "Agent" class	22
7. "ArrivalConveyanceFacility" class	22
8. "ArrivalTransportMeans" class	23
9. "AssociatedTransportDocument" class	23
10. "BorderTransportMeans" class	23
11. "Buyer" class	24
12. "Carrier" class	25
13. "Commodity" class	25
14. "Communication" class	26
15. "Consignee" class	26
16. "Consignment" class	26
17. "ConsignmentItem" class	27
18. "ConsignmentItemPackaging" class	27
19. "ConsignmentPackaging" class	27
20. "Consignor" class	28
21. "Consolidator" class	28
22. "ConsortiumCarrier" class	28
23. "Contact" class	28
24. "ContainerTerminalOperator" class	29
25. "CrewMember" class	29
26. "CurrencyExchange" class	29
27. "CustomsGoodsItem" class	29
28. "CustomsProcedure" class	29
29. "CustomsValuation" class	30
30. "Declaration" class	30
31. "DeclarationPackaging" class	31
32. "Deconsolidator" class	32
33. "DeliveryDestination" class	32
34. "DepartureConveyance Facility" class	32
35. "DepartureTransportMeans" class	32
36. "Document" class	32
37. "DutyTaxFee" class	33
38. "EntryCustomsOffice" class	33
39. "EquipmentIdentification" class	33
40. "ExaminationPlace" class	34
41. "ExitCustomsOffice" class	34
42. "Exporter" class	34
43. "FreightPayment" class	34
44. "GoodsConsignedPlace" class	34
45. "GoodsLocation" class	35

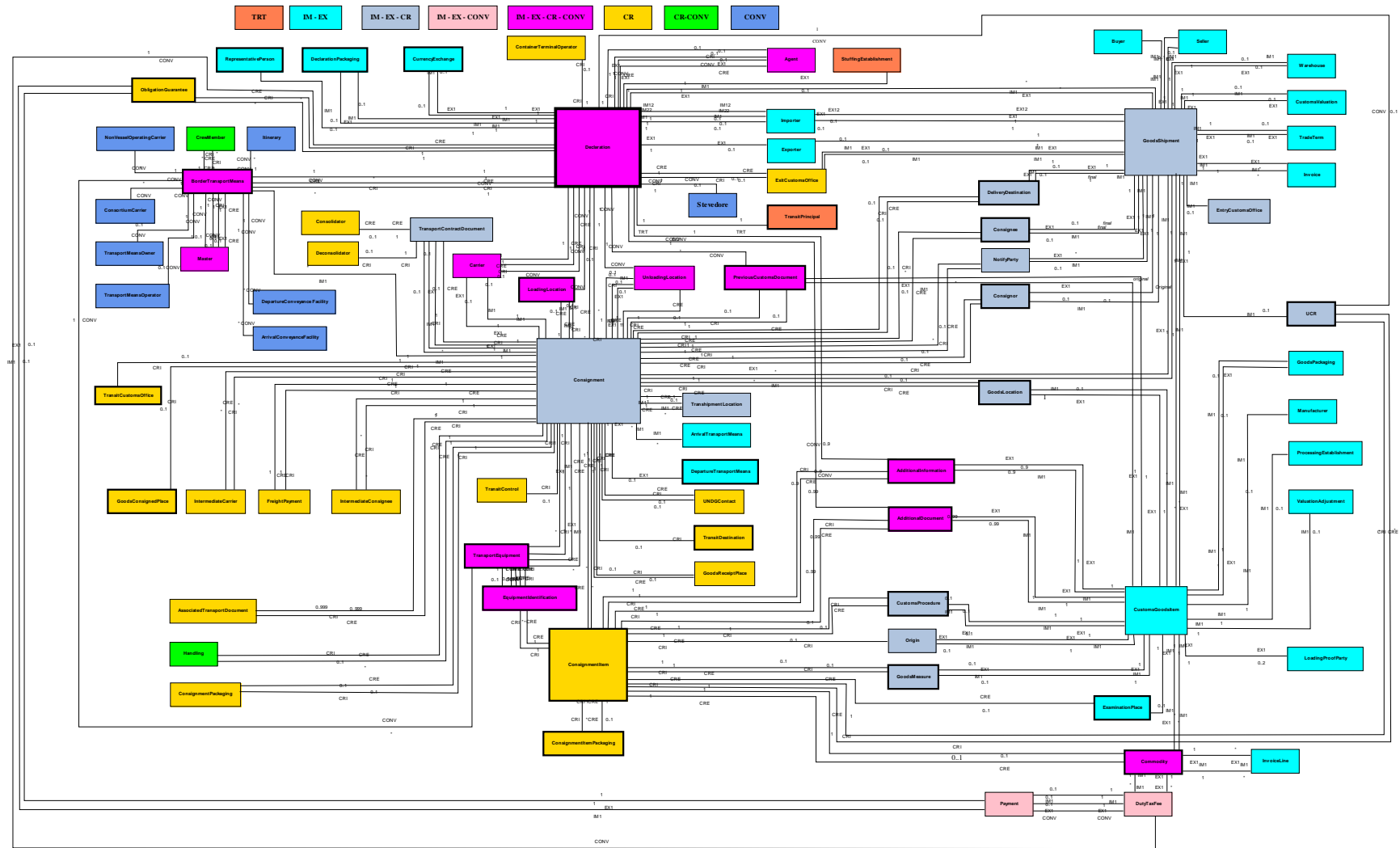
WCO Data Model Version 2

46.	"GoodsMeasure" class.....	35
47.	"GoodsPackaging" class.....	35
48.	"GoodsReceiptPlace" class	35
49.	"GoodsShipment" class	36
50.	"Handling" class	36
51.	"Importer" class	36
52.	"IntermediateCarrier" class	36
53.	"IntermediateConsignee" class	37
54.	"Invoice" class.....	37
55.	"InvoiceLine" class	37
56.	"Itinerary" class	37
57.	"LoadingLocation" class	38
58.	"LoadingProofParty" class	38
59.	"Location" class	38
60.	"Manufacturer" class	38
61.	"Master" class.....	39
62.	"NonVesselOperatingCarrier" class	39
63.	"NotifyParty" class	39
64.	"ObligationGuarantee" class	39
65.	"Origin" class	40
66.	"Packaging" class	40
67.	"Party" class	40
68.	"Payment" class.....	40
69.	"PreviousCustomsDocument" class	41
70.	"ProcessingEstablishment" class	41
71.	"RepresentativePerson" class	41
72.	"Seller" class	41
73.	"Stevedore" class.....	42
74.	"StuffingEstablishment" class	42
75.	"TradeTerm" class.....	42
76.	"TransshipmentLocation" class	43
77.	"TransitCustomsOffice" class	43
78.	"TransitDestination" class	43
79.	"TransitPrincipal" class	43
80.	"TransitControl" class	43
81.	"TransportContractDocument" class	44
82.	"TransportEquipment" class.....	44
83.	"TransportMeans" class.....	45
84.	"TransportMeansOperator" class	45
85.	"TransportMeansOwner" class.....	45
86.	"UnloadingLocation" class.....	45
87.	"UCR" class	46
88.	"UNDGContact" class.....	46
89.	"ValuationAdjustment" class	46
90.	"Warehouse" class.....	46

1. General design

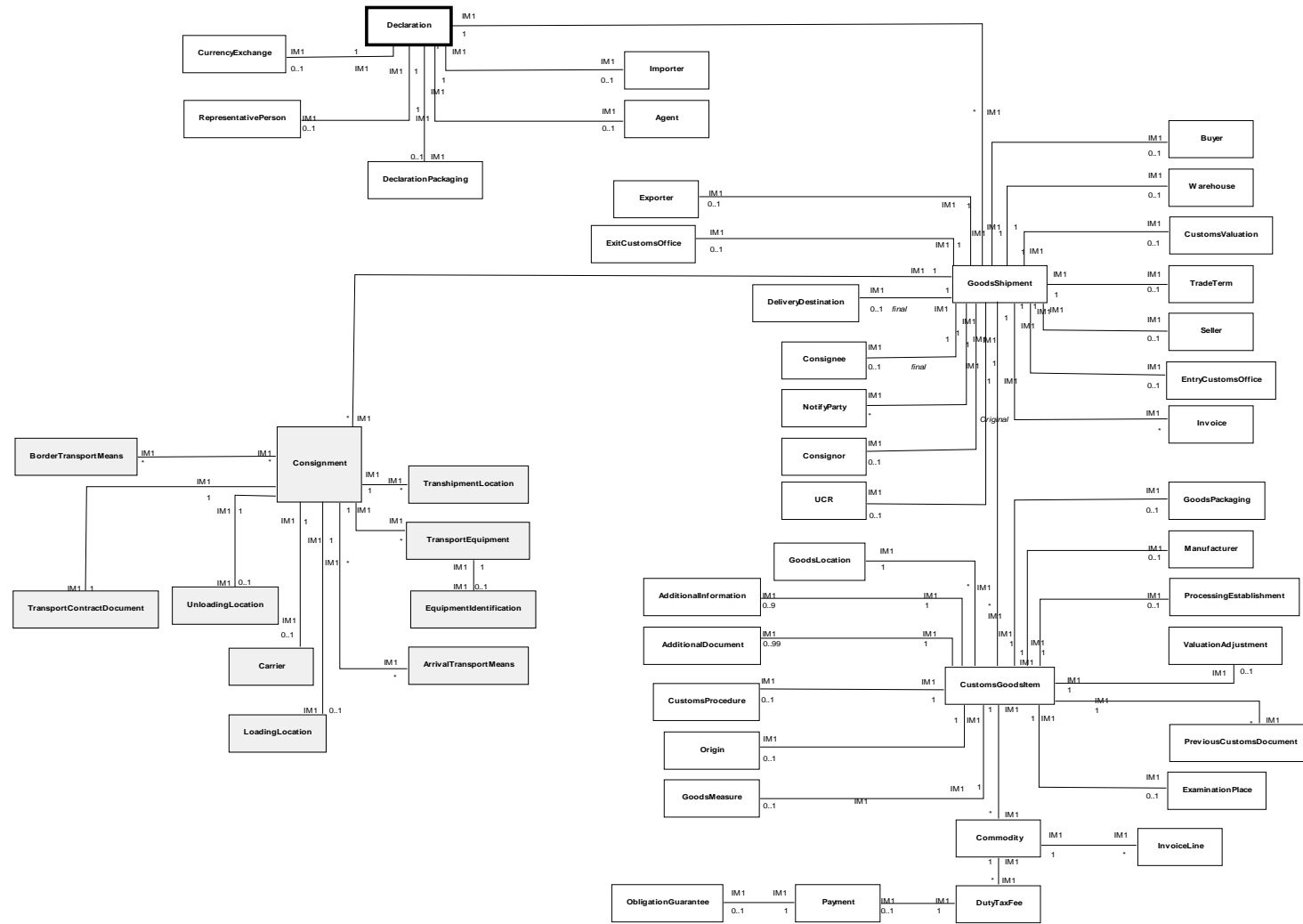
1. Description

WCO Data Model Version 2



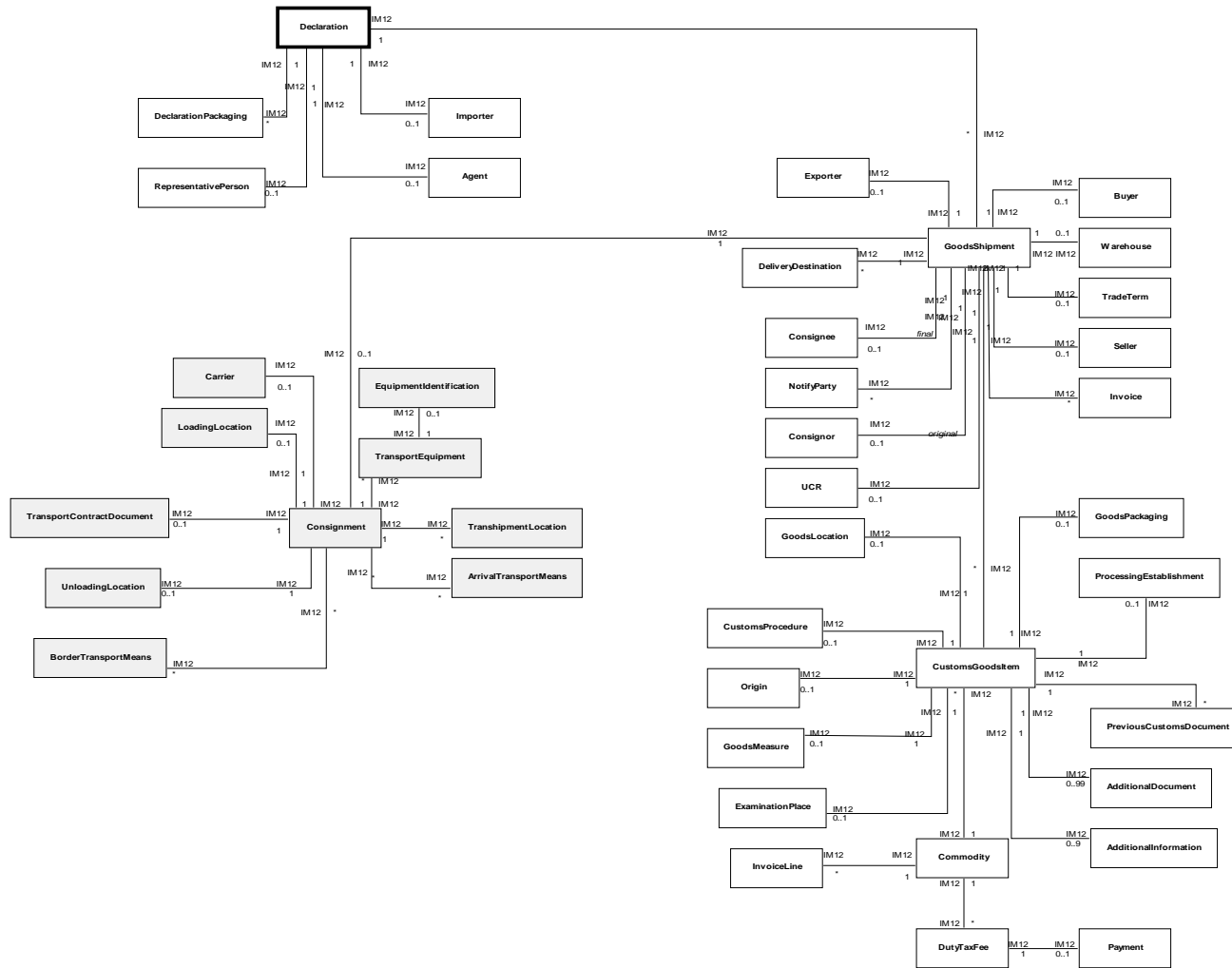
Overall multi link diagram

WCO Data Model Version 2



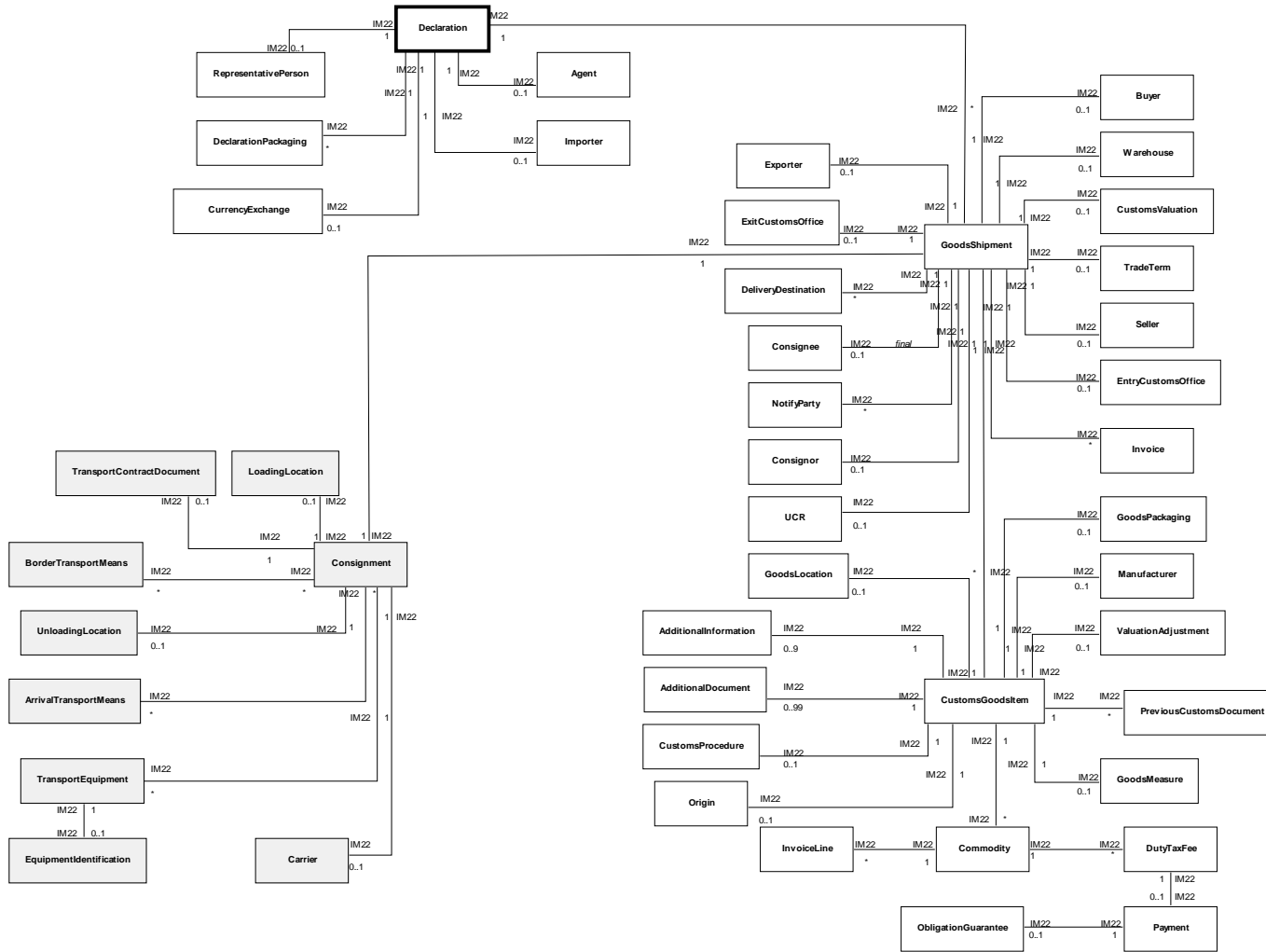
: WCO Data Model IM1 class diagram

WCO Data Model Version 2



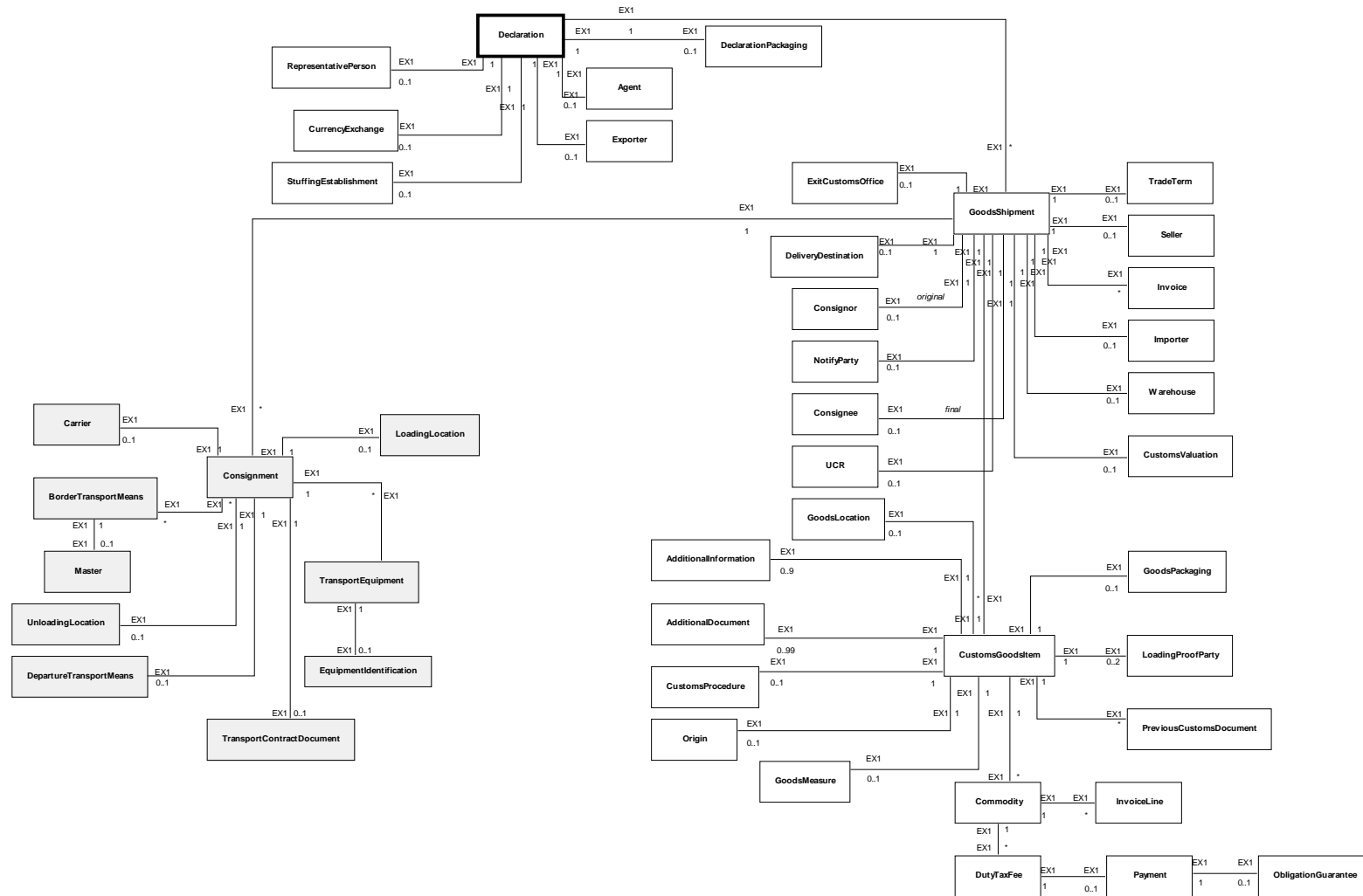
WCO Data Model IM12 class diagram

WCO Data Model Version 2



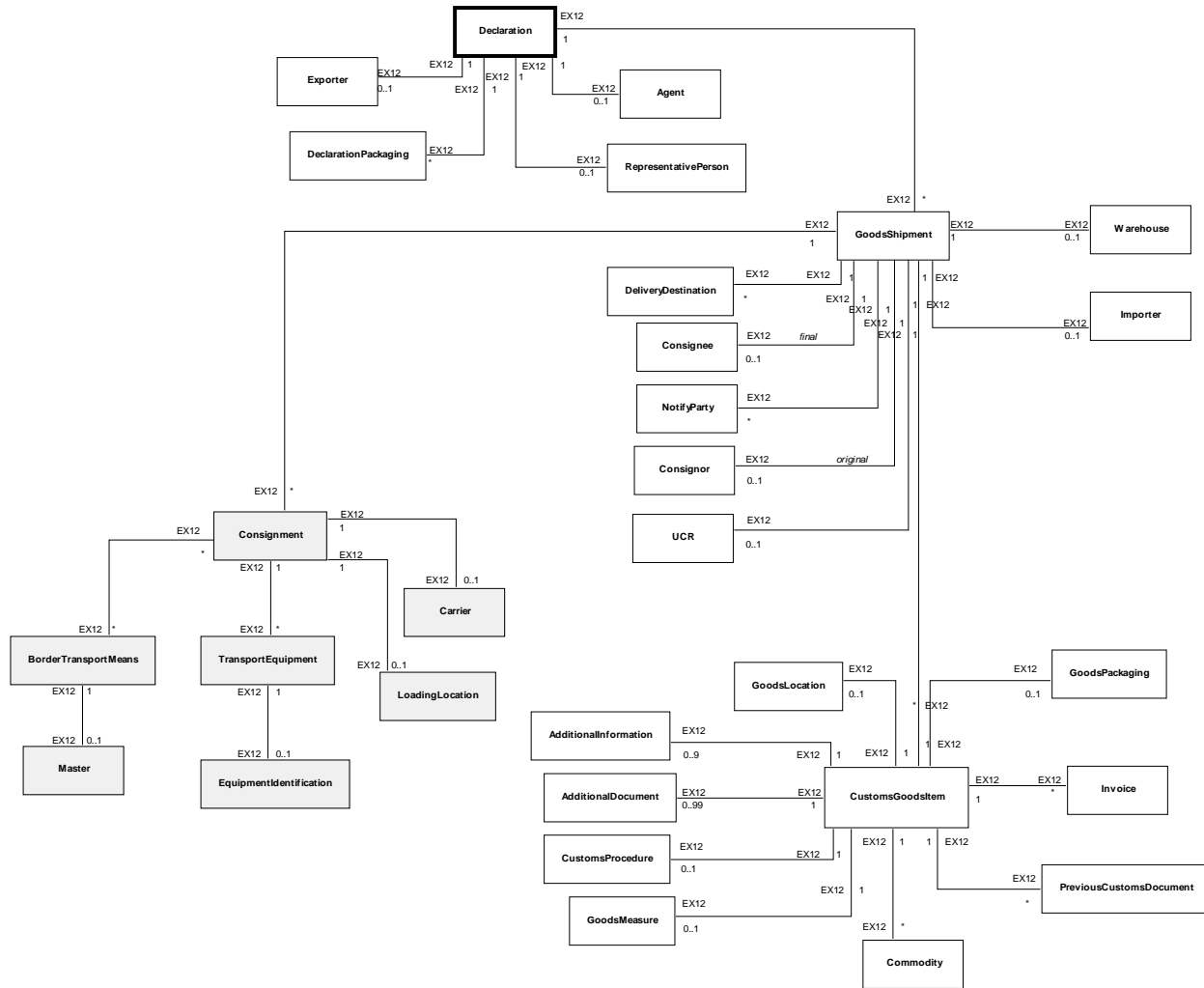
WCO Data Model IM22 class diagram

WCO Data Model Version 2



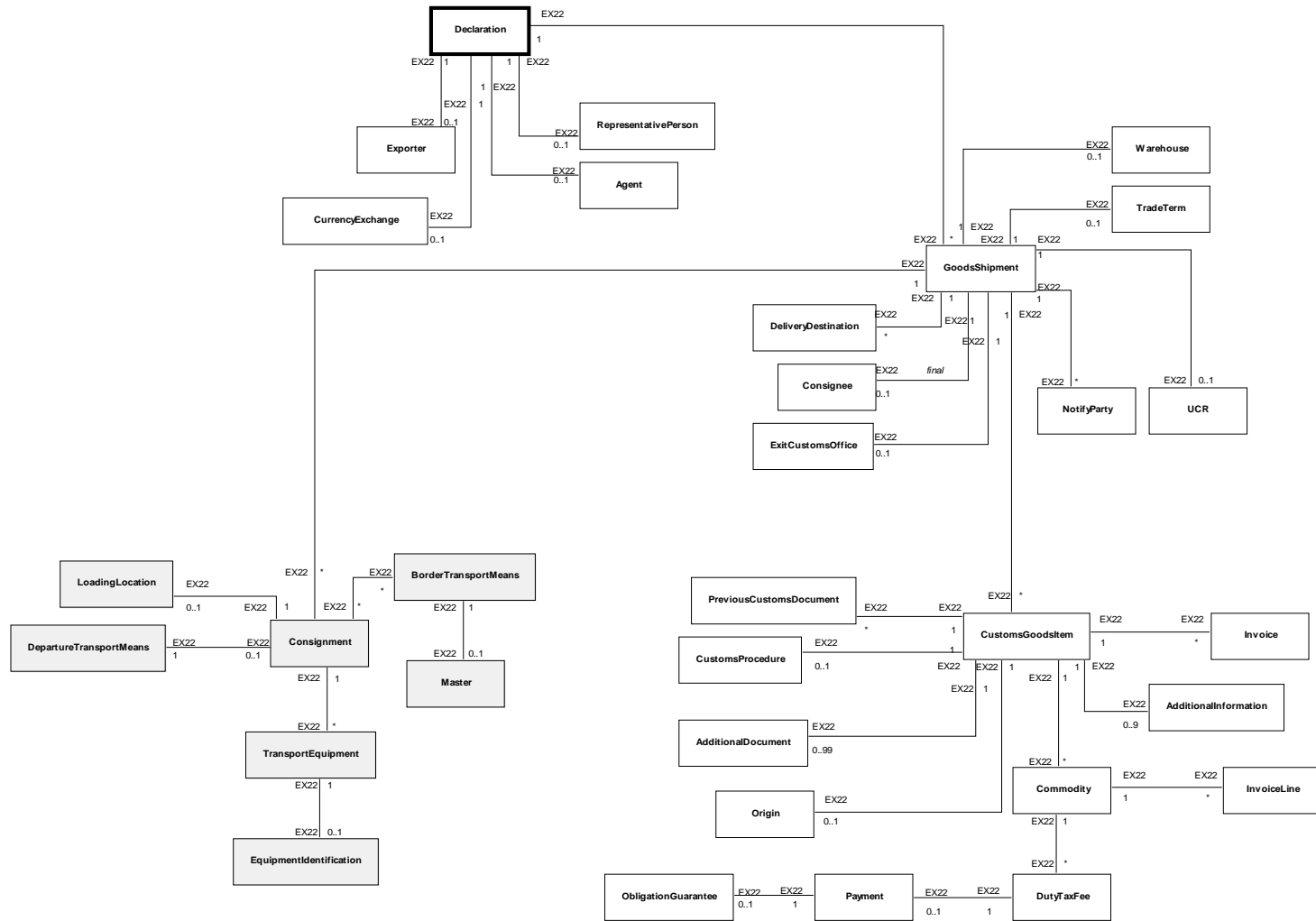
WCO Data Model EX1 class diagram

WCO Data Model Version 2



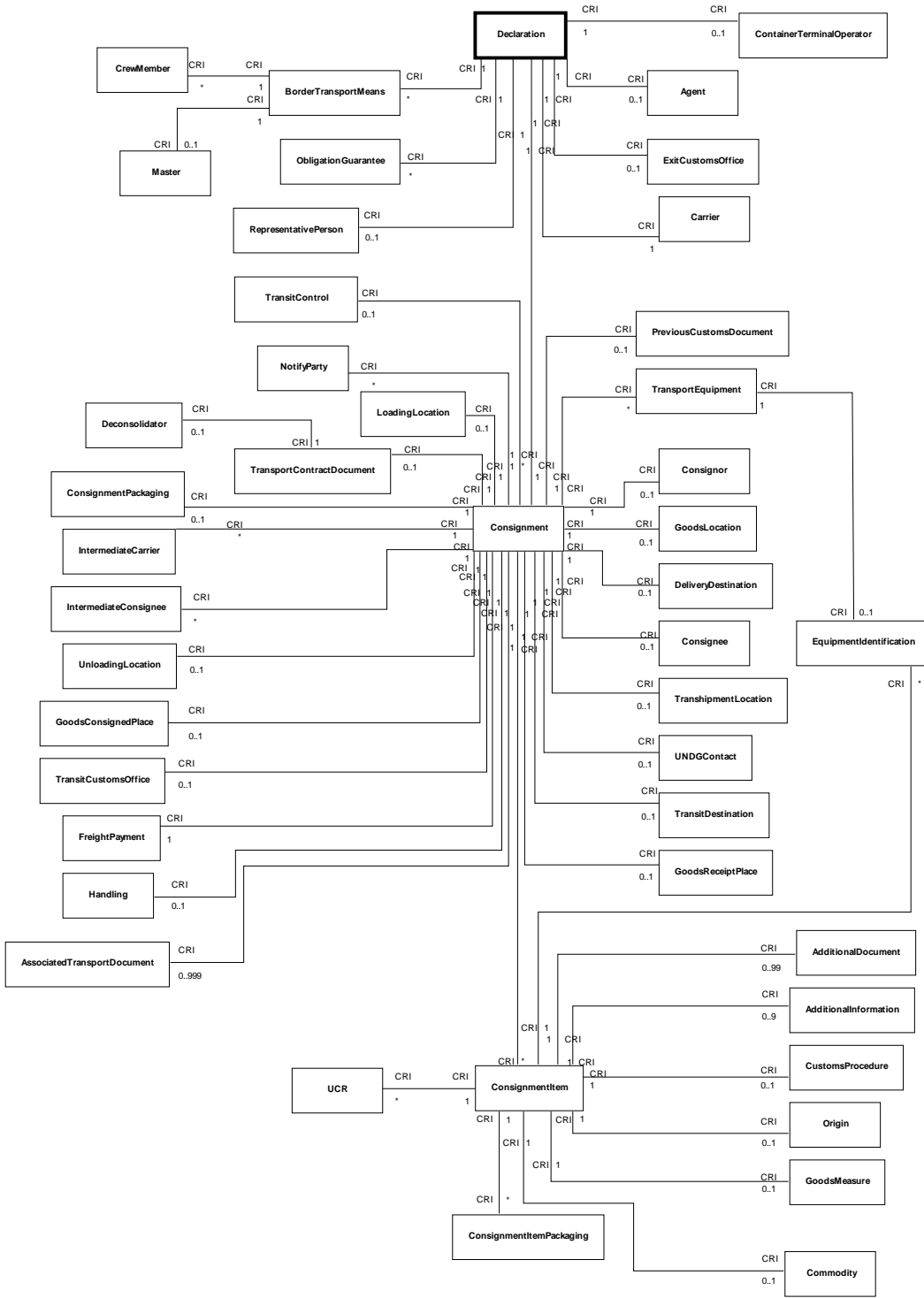
WCO Data Model EX12 class diagram

WCO Data Model Version 2



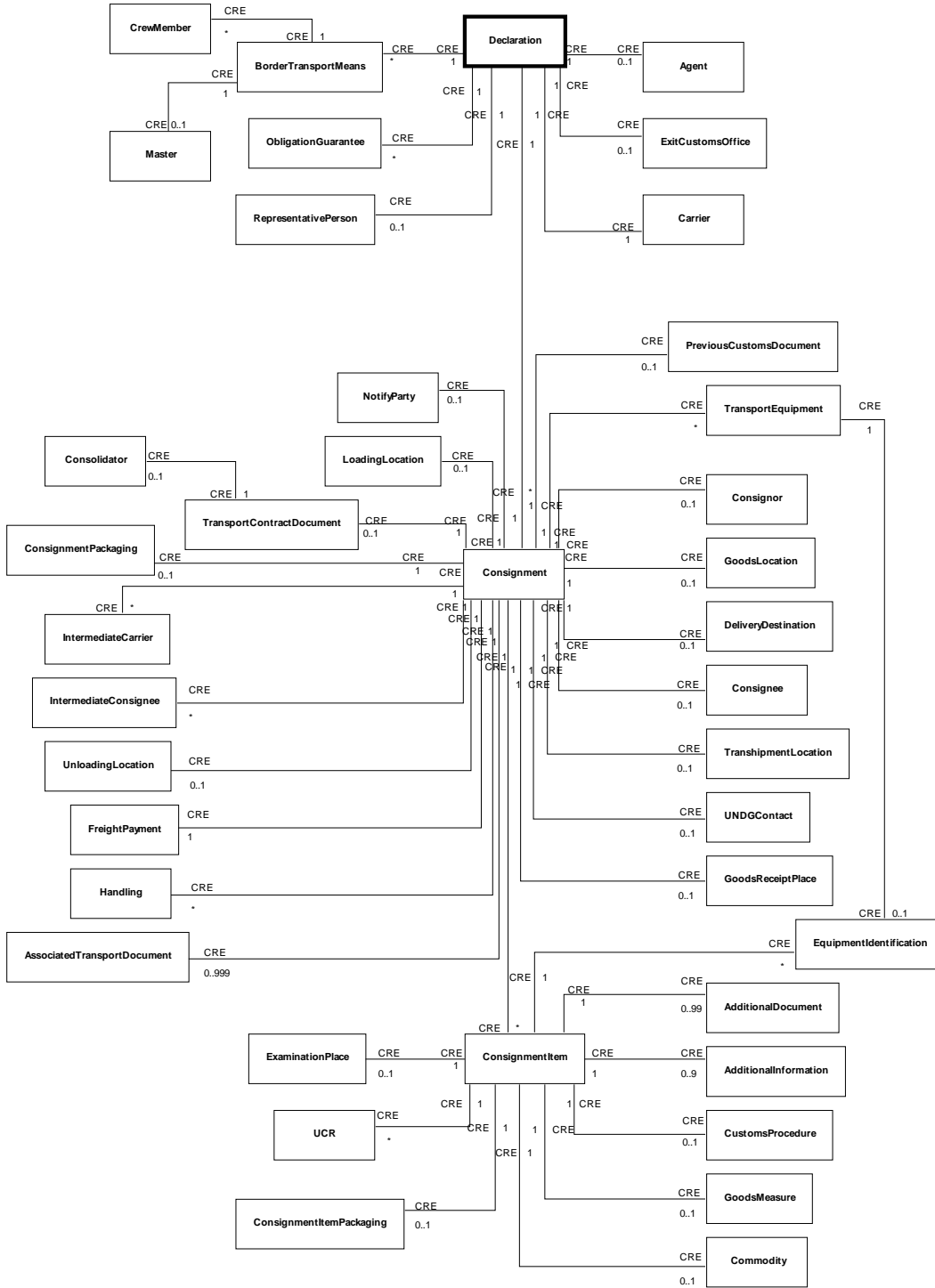
WCO Data Model EX22 class diagram

WCO Data Model Version 2



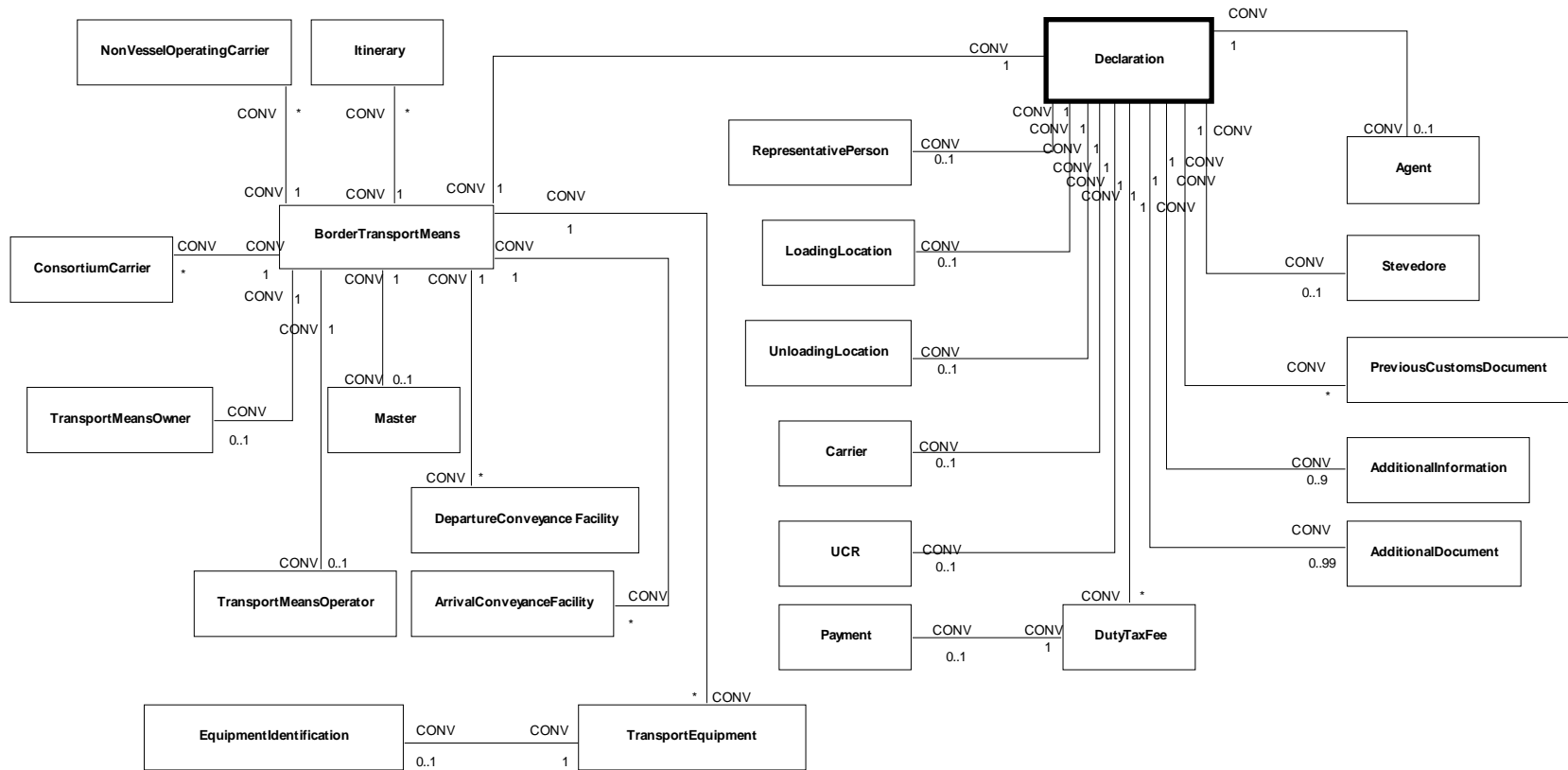
WCO Data Model CRI class diagram

WCO Data Model Version 2



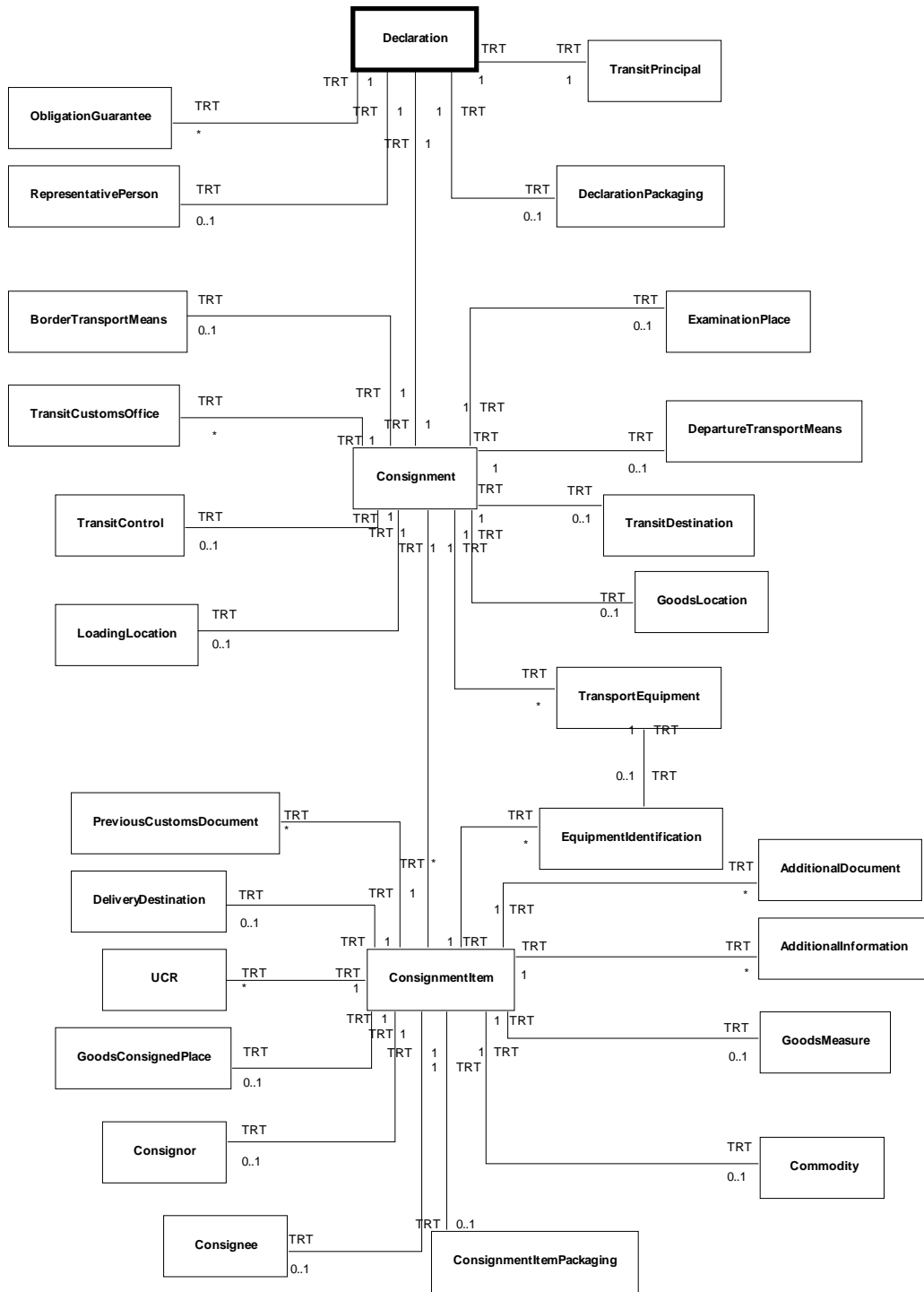
WCO Data Model CRE class diagram

WCO Data Model Version 2

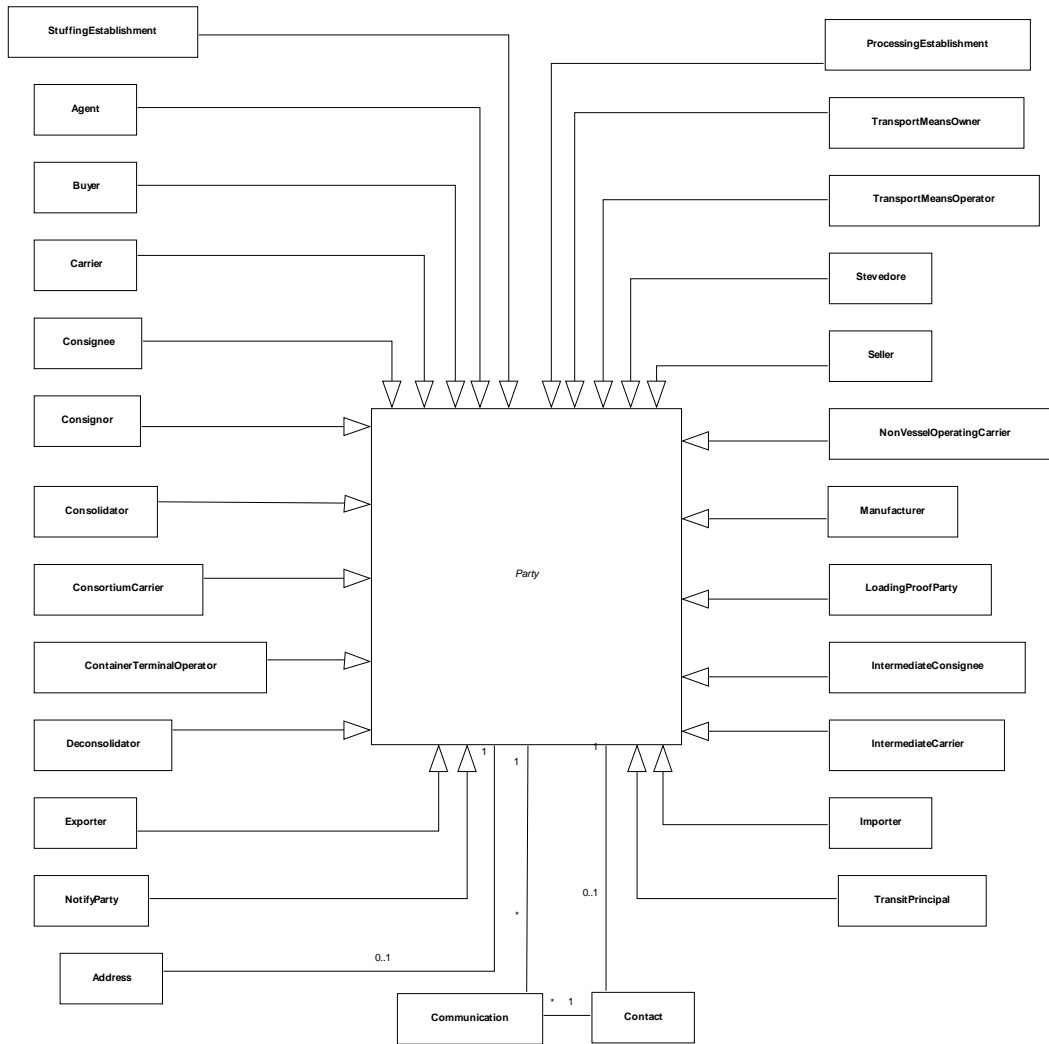


WCO Data Model CONV class diagram

WCO Data Model Version 2

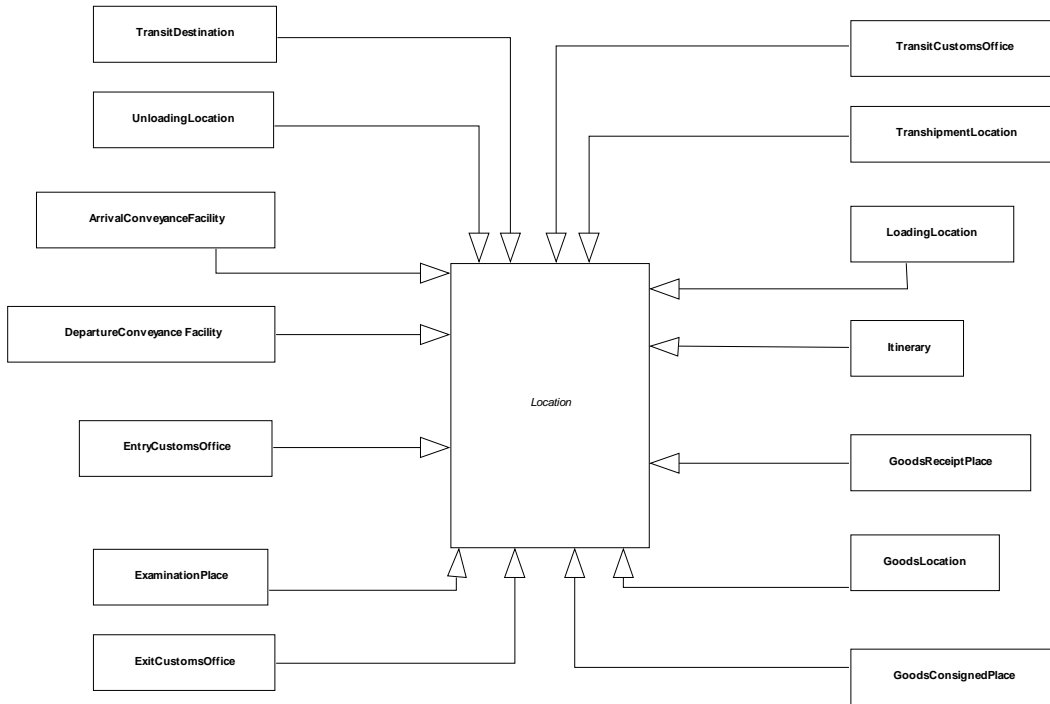


WCO Data Model TRT class diagram

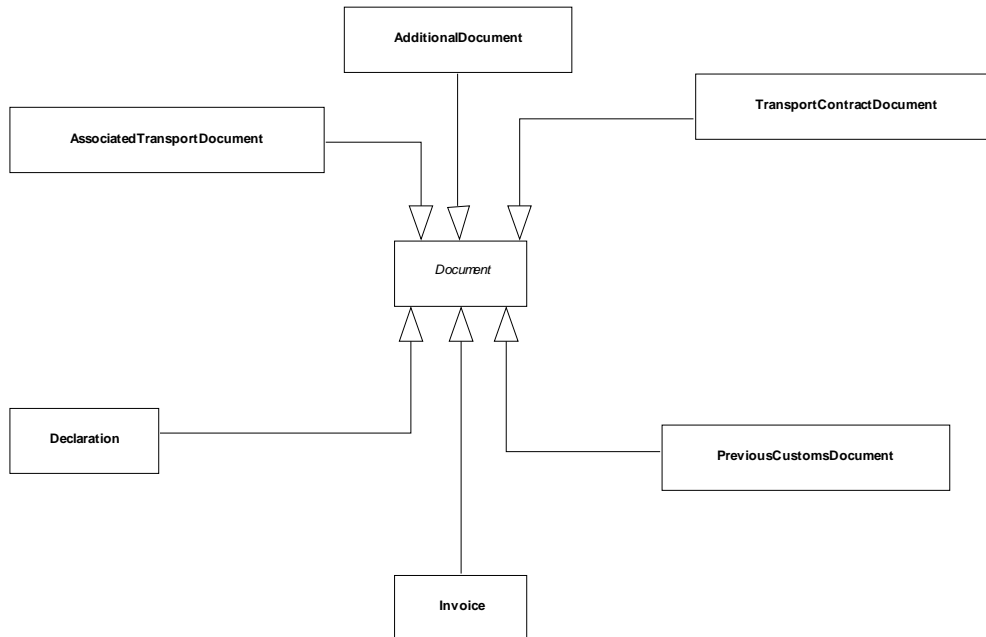


WCO Data Model Super class Party

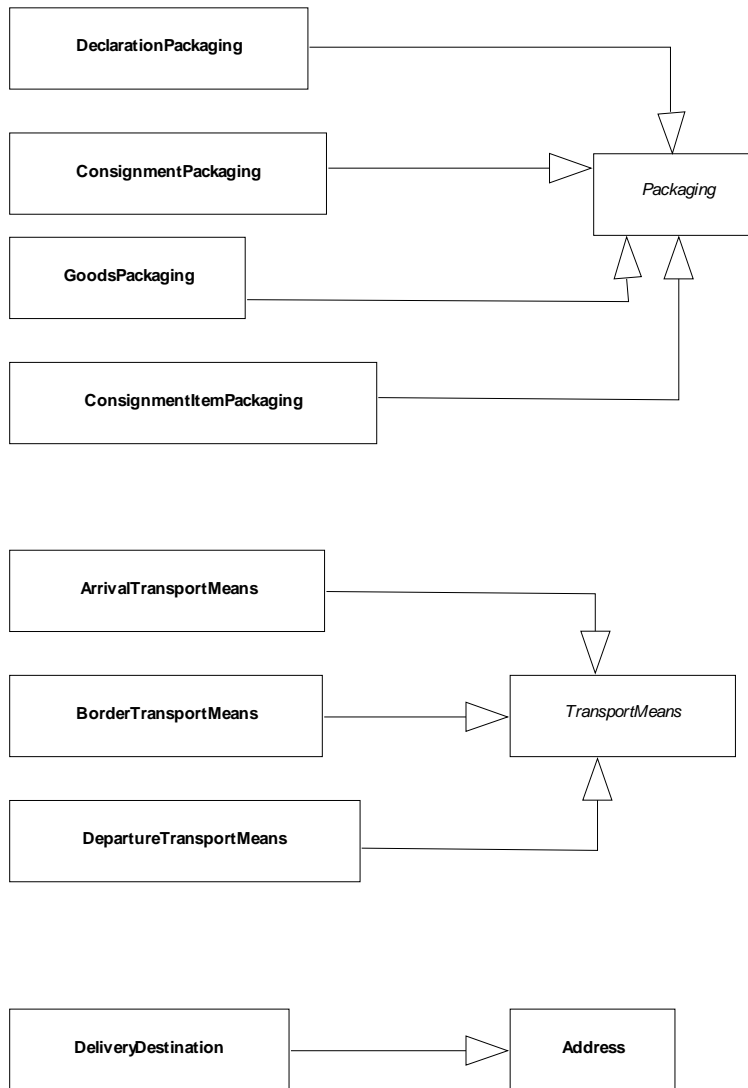
WCO Data Model Version 2



WCO Data Model Super class Location



WCO Data Model Super class Document



WCO Data Model Super class TransportMeans, Packaging & Address

2. Essential elements of this design

Classes :

- AdditionalDocument
- AdditionalInformation
- Address
- Agent
- ArrivalConveyanceFacility
- ArrivalTransportMeans
- AssociatedTransportDocument
- BorderTransportMeans : .
- Buyer
- Carrier
- Commodity
- Communication
- Consignee : .
- Consignment
- ConsignmentItem
- ConsignmentItemPackaging
- ConsignmentPackaging
- Consignor
- Consolidator
- ConsortiumCarrier
- Contact
- ContainerTerminalOperato.
- CrewMember
- CurrencyExchange
- CustomsGoodsItem
- CustomsProcedure
- CustomsValuation
- Declaration
- DeclarationPackaging
- Deconsolidator
- DeliveryDestination .
- DepartureConveyance Facility
- DepartureTransportMeans
- Document
- DutyTaxFee
- EntryCustomsOffice
- EquipmentIdentification
- ExaminationPlace
- ExitCustomsOffice
- Exporter
- FreightPayment
- GoodsConsignedPlace
- GoodsLocation
- GoodsMeasure
- GoodsPackaging
- GoodsReceiptPlace
- GoodsShipment
- Handling
- Importer
- IntermediateCarrier
- IntermediateConsignee
- Invoice
- InvoiceLine
- Itinerary
- LoadingLocation
- LoadingProofParty
- Location
- Manufacturer
- Master
- NonVesselOperatingCarrier
- NotifyParty : Party to be notified
- ObligationGuarantee
- Origin
- Packaging
- Party
- Payment
- PreviousCustomsDocument
- ProcessingEstablishment
- RepresentativePerson
- Seller
- Stevedore
- StuffingEstablishment
- TradeTerm
- TranshipmentLocation
- TransitCustomsOffice
- TransitDestination
- TransitPrincipal
- TransitControl
- TransportContractDocument
- TransportEquipment
- TransportMeans
- TransportMeansOperator
- TransportMeansOwner
- UnloadingLocation
- UCR
- UNDGContact
- ValuationAdjustment
- Warehouse

3. "AdditionalDocument" class

1. Description

WCO REFERENCE: 170
DATA SET USE: IM1, IM12, IM22, EX1, EX12, EX22, CRI, CRE, CONV, TRT

WCO REFERENCE: 003
DATA SET USE: IM1, IM12, IM22, EX1, EX12, EX22, CRI, CRE, CONV, TRT

WCO REFERENCE: 219
DATA SET USE: IM1, EX1, CONV

WCO REFERENCE: 261
DATA SET USE: CONV

WCO REFERENCE: 262
DATA SET USE: CRI, CRE

Parent classes :

- *Document*

Attributes :

- *public Set(0..1) name type* :

WCO REFERENCE: 185
DATA SET USE: IM1, IM12, IM22, EX1, EX12, EX22

- *public Set(0..1) amount amount* :

WCO REFERENCE: 263
DATA SET USE: CRI, CRE

4. "AdditionalInformation" class

1. Description

Attributes :

- *public Set(0..1) text content* :

WCO REFERENCE: 105
DATA SET USE: IM1, IM12, IM22, EX1, EX12, EX22, CRI, CRE, CONV, TRT

- *public Set(0..1) indicator exportCertificate* :

WCO REFERENCE: 180
DATA SET USE: EX1

- *public Set(0..1) date requestedInspection* :

WCO REFERENCE: 220
DATA SET USE: IM1, IM12

- *public Set(0..3) code requestOverride* :

WCO REFERENCE: 095
DATA SET USE: IM1, IM12, IM22, EX1, EX12, EX22

- *public Set(0..1) code statement* :

WCO REFERENCE: 226
DATA SET USE: IM1, IM12, IM22, EX1, EX12, EX22, CRI, CRE, TRT

- *public Set(0..1) text statementDescription* :

WCO REFERENCE: 225
DATA SET USE: IM1, IM12, IM22, EX1, EX12, EX22, CRI, CRE, TRT

5. "Address" class

1. Description

Attributes :

- *public Set(0..1) name city* :
WCO REFERENCE: 241
DATA SET USE: IM1, IM12, IM22, EX1, EX12, EX22, CRI, CRE, CONV, TRT
- *public Set(0..1) code country* :
WCO REFERENCE: 242
DATA SET USE: IM1, IM12, IM22, EX1, EX12, EX22, CRI, CRE, CONV, TRT
- *public Set(0..1) identifier countrySubEntity* :
WCO REFERENCE: 244
DATA SET USE: IM1, IM12, IM22, EX1, EX12, EX22, CRI, CRE, CONV, TRT
- *public Set(0..1) name countrySubEntityname* :
WCO REFERENCE: 243
DATA SET USE: IM1, IM12, IM22, EX1, EX12, EX22, CRI, CRE, CONV, TRT
- *public Set(0..2) text line* :
WCO REFERENCE: 239
DATA SET USE: IM1, IM12, IM22, EX1, EX12, EX22, CRI, CRE, CONV, TRT
- *public Set(0..1) identifier postcode* :
WCO REFERENCE: 245
DATA SET USE: IM1, IM12, IM22, EX1, EX12, EX22, CRI, CRE, CONV, TRT

6. "Agent" class

1. Description

- WCO REFERENCE: 061
DATA SET USE: IM1, IM12, IM22, EX1, EX12, EX22, CRI, CRE, CONV
- WCO REFERENCE: 060
DATA SET USE: IM1, IM12, IM22, EX1, EX12, EX22, CONV

Parent classes :

- *Party*

Attributes :

- *public Set(0..1) indicator qualityAssurance* :
WCO REFERENCE: 249
DATA SET USE: IM1, IM12, IM22, EX1, EX12, EX2
- *public Set(0..1) code status* :
WCO REFERENCE: 102
DATA SET USE: IM1, IM12, IM22, EX1, EX12, EX22, CONV

7. "ArrivalConveyanceFacility" class

1. Description

- WCO REFERENCE: 211
DATA SET USE: CONV

Parent classes :

- *Location*

8. "ArrivalTransportMeans" class

1. Description

WCO REFERENCE: 184
DATA SET USE: IM1, IM12,

WCO REFERENCE: 252
DATA SET USE: IM1, IM12,

WCO REFERENCE: 179
DATA SET USE: IM1

WCO REFERENCE: 177
DATA SET USE: IM1, IM22,

Parent classes :

- *TransportMeans*

9. "AssociatedTransportDocument" class

1. Description

WCO REFERENCE: 189
DATA SET USE: CRI, CRE

WCO REFERENCE: 190
DATA SET USE: CRI, CRE

Parent classes :

- *Document*

10. "BorderTransportMeans" class

1. Description

WCO REFERENCE: 160
DATA SET USE: IM1, IM12, IM22, EX1, EX12, EX22, CRI, CRE, CONV, TRT

WCO REFERENCE: 167
DATA SET USE: IM1, IM12, IM22, EX1, EX12, EX22, CRI, CRE, CONV

WCO REFERENCE: 175
DATA SET USE: IM1, IM12, IM22, EX1, EX12, EX22, CRI, CRE, CONV, TRT

WCO REFERENCE: 183
DATA SET USE: IM1, IM12, IM22, EX1, EX12, EX22, CRI, CRE, CONV, TRT

Parent classes :

- *TransportMeans*

Attributes :

- *public Set(0..1) dateTime arrival :*

WCO REFERENCE: 172
DATA SET USE: IM1, IM12, IM22, CRI, CRE, CONV

- *public Set(0..1) code callPurpose :*
 WCO REFERENCE: 148
 DATA SET USE: CONV
- *public Set(0..1) text cargoFacilityLocation :*
 WCO REFERENCE: 204
 DATA SET USE: CRI, CONV
- *public Set(0..1) quantity container :*
 WCO REFERENCE: 150
 DATA SET USE: CONV
- *public Set(0..1) quantity crew :*
 WCO REFERENCE: 119
 DATA SET USE: CONV
- *public Set(0..1) dateTime departure :*
 WCO REFERENCE: 156
 DATA SET USE: CRI, CRE, CONV
- *public Set(0..1) dateTime dischargeCompleted :*
 WCO REFERENCE: 029
 DATA SET USE: CONV
- *public Set(0..1) identifier firstArrivalLocation :*
 WCO REFERENCE: 085
 DATA SET USE: IM1, IM12, CRI, CRE, CONV
- *public Set(0..1) measure grossWeight :*
 WCO REFERENCE: 132
 DATA SET USE: CONV
- *public Set(0..1) identifier journey :*
 WCO REFERENCE: 149
 DATA SET USE: IM1, IM12, CRI, CRE, CONV
- *public Set(0..1) measure length :*
 WCO REFERENCE: 207
 DATA SET USE: CONV
- *public Set(0..1) measure maximumDraft :*
 WCO REFERENCE: 206
 DATA SET USE: CONV
- *public Set(0..1) measure netWeight :*
 WCO REFERENCE: 133
 DATA SET USE: CONV
- *public Set(0..1) quantity passenger :*
 WCO REFERENCE: 140
 DATA SET USE: CONV
- *public Set(0..1) identifier scheduled Conveyance Identifier :*
 WCO REFERENCE: 205
 DATA SET USE: CRI, CRE, CONV
- *public Set(0..1) identifier stay :*
 WCO REFERENCE: 010
 DATA SET USE: CRI, CRE (only maritime mode)

11. "Buyer" class

1. Description

- WCO REFERENCE: 035
 DATA SET USE: IM1, IM12, IM22
- WCO REFERENCE: 036
 DATA SET USE: IM1, IM12, IM22

Parent classes :

- Party

12. "Carrier" class

1. Description

Name and address details of the party undertaking or arranging transport of goods between named points.

WCO REFERENCE: 049
DATA SET USE: IM1, IM12, EX1, EX12, CRI, CRE, CONV

WCO REFERENCE: 050
DATA SET USE: IM1, IM12, IM22, EX1, CRI, CRE, CONV

Parent classes :

- Party

13. "Commodity" class

1. Description

Attributes :

- *public Set(0..1) name brand :*

WCO REFERENCE: 258
DATA SET USE: IM1,IM12,IM22, EX1,EX12, EX22

- *public Set(0..1) text cargoDescription :*

WCO REFERENCE: 138
DATA SET USE: CRI, CRE, TRT

- *public Set(0..1) text description :*

WCO REFERENCE: 137
DATA SET USE: IM1, IM12, IM22, EX1, EX12, EX22

- *public Set(0..1) identifier exportLicenseCategory :*

WCO REFERENCE: 008
DATA SET USE: EX1

- *public code geneticModification :*

WCO REFERENCE: 229
DATA SET USE: IM1, IM12

- *public Set(0..1) name grade :*

WCO REFERENCE: 260
DATA SET USE: IM1, IM12, IM22, EX1, EX12, EX22

- *public Set(*) identifier identification :*

WCO REFERENCE: 147
DATA SET USE: EX1, EX12, CRI, CRE

- *public Set(0..1) text ingredients :*

WCO REFERENCE: 259
DATA SET USE: IM1, IM12, IM22, EX1, EX12, EX22

- *public Set(0..1) identifier modelNumber :*

WCO REFERENCE: 257
DATA SET USE: IM1, IM12, IM22, EX1, EX12, EX22

- *public Set(0..1) identifier tariffClassification :*

WCO REFERENCE: 145
DATA SET USE: IM1, IM12, IM22, EX1, EX12, EX22, CRI, CRE, TRT

- *public Set(0..1) identifier tariffClassificationExtension :*

WCO REFERENCE: 255
DATA SET USE: IM1, IM12, IM22, EX1, EX22

- *public Set(0..1) code sensitiveGoods* :
WCO REFERENCE: 234
DATA SET USE: TRT
- *public Set(0..1) code UNDG* :
WCO REFERENCE: 143
DATA SET USE: IM1, IM12, EX1, EX12, CRI, CRE

14. "Communication" class

1. Description

Attributes :

- *public identifier identity* :
WCO REFERENCE: 240
DATA SET USE: IM1, IM12, IM22, EX1, EX12, EX22, CRI, CRE, CONV
- *public identifier type* :
WCO REFERENCE: 253
DATA SET USE: IM1, IM12, IM22, EX1, EX12, EX22, CRI, CRE, CONV

15. "Consignee" class

1. Description

- WCO REFERENCE: 051
DATA SET USE: IM1, IM12, IM22, EX1, EX12, EX22, CRI, CRE, TRT
- WCO REFERENCE: 052
DATA SET USE: IM1, IM12, IM22, EX1, EX12, EX22, CRI, CRE, TRT

Parent classes :

- *Party*

16. "Consignment" class

1. Description

Attributes :

- *public Set(0..1) indicator arrivalConfirmation* :
WCO REFERENCE: 162
DATA SET USE: CRI
- *public Set(0..1) identifier carrierAssigned* :
WCO REFERENCE: 004
DATA SET USE: EX1
- *public Set(0..1) indicator container* :
WCO REFERENCE: 096
DATA SET USE: IM1, IM12, EX1, TRT
- *public Set(0..1) code customsStatus* :
WCO REFERENCE: 094
DATA SET USE: CRI, CRE – CRE only maritime mode,
- *public Set(0..1) measure grossVolume* :
WCO REFERENCE: 134
DATA SET USE: CRI (1) – CRI only maritime mode
- *public Set(0..9) code routingCountry* :
WCO REFERENCE: 064

DATA SET USE: CRI, CRE
• *public Set(0..1) numeric sequence* :
WCO REFERENCE: 006
• *public Set(0..1) indicator split* :
WCO REFERENCE: 011
DATA SET USE: CRI, CRE
• *public Set(0..1) amount value* :
WCO REFERENCE: 110
DATA SET USE: CRI - only maritime mode -, CRE

17. "ConsignmentItem" class

1. Description

Attributes :

• *public Set(0..1) numeric sequence* :
WCO REFERENCE: 006
• *public identifier associatedCustomsProcedure* :
WCO REFERENCE: 233
DATA SET USE: TRT
• *public Set(0..1) code customsStatus* :
WCO REFERENCE: 094
DATA SET USE: TRT

18. "ConsignmentItemPackaging" class

1. Description

WCO REFERENCE: 141
DATA SET USE: CRI, CRE, TRT

WCO REFERENCE: 142
DATA SET USE: CRI, CRE, TRT

WCO REFERENCE: 139
DATA SET USE: CRI, CRE, TRT

Parent classes :

- *Packaging*

19. "ConsignmentPackaging" class

1. Description

WCO REFERENCE: 141
DATA SET USE: CRI, CRE

WCO REFERENCE: 146
DATA SET USE: CRI, CRE

Parent classes :

- *Packaging*

20. "Consignor" class

1. Description

WCO REFERENCE: 071
DATA SET USE: IM1, IM22, EX1, EX12, CRI, CRE, TRT

WCO REFERENCE: 072
DATA SET USE: IM1, IM12, IM22, EX1, EX12, CRI, CRE, TRT

Parent classes :

- *Party*

21. "Consolidator" class

1. Description

WCO REFERENCE: 192
DATA SET USE: CRE

WCO REFERENCE: 193
DATA SET USE: CRE

Parent classes :

- *Party*

22. "ConsortiumCarrier" class

1. Description

Name and address details of the consortium carrier.

WCO REFERENCE: 215
DATA SET USE: CONV

WCO REFERENCE: 216
DATA SET USE: CONV

Parent classes :

- *Party*

23. "Contact" class

1. Description

Associations :

- *undefined : (0-*) as undefined to Communication (1-1) as undefined*

Attributes :

- *public Set(0..1) name name :*

WCO REFERENCE: 246
DATA SET USE: IM1, IM12, IM22, EX1, EX12, EX22, CRI, CRE, CONV

24. "ContainerTerminalOperator" class

1. Description

Name of party operating a container terminal.

WCO REFERENCE: 056

DATA SET USE: CRI - only maritime mode

Parent classes :

- Party

25. "CrewMember" class

1. Description

Attributes :

- *public Set(0..1) identifier registration* :

WCO REFERENCE: 218

DATA SET USE: CRI, CRE, CONV

26. "CurrencyExchange" class

1. Description

Attributes :

- *public Set(0..1) rate rate* :

WCO REFERENCE: 118

DATA SET USE: IM1, IM22, EX1, EX22

- *public Set(0..1) code currencyType* :

WCO REFERENCES: 135

27. "CustomsGoodsItem" class

1. Description

Attributes :

- *public Set(0..1) amount customsValue* :

WCO REFERENCE: 108

DATA SET USE: IM1, IM12, IM22,

- *public Set(0..1) numeric sequence* :

WCO REFERENCE: 006

- *public Set(0..1) amount statisticalValue* :

WCO REFERENCE: 114

DATA SET USE: IM1, IM22, EX1, EX22

28. "CustomsProcedure" class

1. Description

Attributes :

- *public Set(0..1) code current* :

WCO REFERENCE: 166

DATA SET USE: IM1, IM12, IM22, EX1, EX12, EX22, CRI, CRE

- *public Set(0..1) code previous* :
- WCO REFERENCE: 161
DATA SET USE: IM1, IM12, IM22, EX1, EX12, EX22

29. "CustomsValuation" class

1. Description

Attributes :

- *public Set(0..1) amount exitToEntryCharge* :
- WCO REFERENCE: 121
DATA SET USE: IM1, IM22
- *public Set(0..1) amount freightCharge* :
- WCO REFERENCE: 117
DATA SET USE: IM1, IM22, EX1
- *public Set(0..1) code freightCharge Apportionment* :
- WCO REFERENCE: 124
DATA SET USE: IM1, IM22
- *public Set(0..1) code method* :
- WCO REFERENCE: 122
DATA SET USE: IM1, IM22
- *public Set(0..1) amount otherChargeDeduction* :
- WCO REFERENCE: 181
DATA SET USE: IM1, IM22
- *public Set(0..1) code partyRelationship* :
- WCO REFERENCE: 163
DATA SET USE: IM1, IM22, EX1

30. "Declaration" class

1. Description

- WCO REFERENCE: 001
DATA SET USE: IM1, IM12, IM22, EX1, EX12, EX22, CRI, CRE, CONV, TRT
- WCO REFERENCE: 002
DATA SET USE: IM1, IM12, IM22, EX1, EX12, EX22, CRI, CRE, CONV, TRT
- WCO REFERENCE: 022
DATA SET USE: IM1, IM12, EX1, EX12, TRT
- WCO REFERENCE: 082
DATA SET USE: IM1, EX1, TRT
- WCO REFERENCE: 099
DATA SET USE: CRI, CONV

Parent classes :

- *Document*

Attributes :

- *public Set(0..1) date acceptance* :
- WCO REFERENCE: 023
DATA SET USE: IM1, IM12, IM22, EX1, EX12, EX22
- *public Set(0..1) identifier authentication* :
- WCO REFERENCE: 104

DATA SET USE: IM1, IM12, IM22, EX1, EX12, EX22, CRI, CRE, CONV
• *public Set(0..1) identifier customsReference :*

WCO REFERENCE: 020
DATA SET USE: IM1, IM12, IM22, EX1, EX12, EX22, CRI, CRE, CONV
• *public Set(0..1) identifier declarationOffice :*

WCO REFERENCE: 065
DATA SET USE: IM1, IM12, IM22, EX1, EX12, EX22, CRI, CRE, CONV, TRT
• *public Set(0..1) code function :*

WCO REFERENCE: 017
DATA SET USE: IM1, IM12, IM22, EX1, EX12, EX22, CRI, CRE, CONV, TRT
• *public Set(0..1) quantity goodsItem :*

WCO REFERENCE: 228
DATA SET USE: IM1,IM12,IM22 EX1,EX12,EX22 TRT
• *public Set(0..1) amount invoice :*

WCO REFERENCE: 109
DATA SET USE: IM1, IM12, IM22, EX1, EX12, EX22
• *public Set(0..1) quantity loadingList :*

WCO REFERENCE: 013
DATA SET USE: IM1, EX1
• *public quantity sealsAffixed :*

WCO REFERENCE: 227
DATA SET USE: TRT
• *public Set(0..1) code status :*

WCO REFERENCE: 019
DATA SET USE: CRI, CRE
• *public Set(0..1) identifier subsequentDeclarationOffice :*

WCO REFERENCE: 187
DATA SET USE: IM12
• *public Set(0..1) measure totalGrossMass :*

WCO REFERENCE: 131
DATA SET USE: IM1, IM12, IM22, EX1, EX12, EX22, CRI, CRE, CONV, TRT
Also includes Measure Unit Qualifier

31. "DeclarationPackaging" class

1. Description

Packaging details relating to the whole declaration.

WCO REFERENCE: 141
DATA SET USE: IM1, IM12, IM22, EX1, EX12

WCO REFERENCE: 142
DATA SET USE: IM1, IM12, IM22, EX1

WCO REFERENCE: 146
DATA SET USE: IM1, IM12, IM22, EX1, EX12, TRT

Parent classes :

- *Packaging*

32. "Deconsolidator" class

1. Description

WCO REFERENCE: 194
DATA SET USE: CRI

WCO REFERENCE: 195
DATA SET USE: CRI

Parent classes :

- *Party*

33. "DeliveryDestination" class

1. Description

The location to which goods are to be delivered.

WCO REFERENCE: 034
DATA SET USE: IM1, IM12, IM22, EX1, EX12, EX22, CRI, CRE, TRT

Parent classes :

- *Address*

34. "DepartureConveyance Facility" class

1. Description

WCO REFERENCE: 212
DATA SET USE: CONV

Parent classes :

- *Location*

35. "DepartureTransportMeans" class

1. Description

WCO REFERENCE: 158
DATA SET USE: EX1, EX22, TRT

WCO REFERENCE: 254
DATA SET USE: EX1, EX22

WCO REFERENCE: 178
DATA SET USE: EX1, TRT

WCO REFERENCE: 176
DATA SET USE: EX1, EX22, TRT

Parent classes :

- *TransportMeans*

36. "Document" class

1. Description

Attributes :

- *public Set(0..1) code changeReason*
- *public Set(0..1) date issue*
- *public Set(0..1) identifier issueLocation*
- *public Set(0..1) text issueLocation*
- *public Set(0..1) identifier issuer*
- *public Set(0..1) identifier reference*
- *public Set(0..1) code type :*

37. "DutyTaxFee" class

1. Description

Attributes :

- *public Set(0..1) amount adValoremTaxBase :*
WCO REFERENCE: 116
DATA SET USE: IM1, IM12, IM22, EX1, EX2
- *public Set(0..1) amount deduct :*
WCO REFERENCE: 111
DATA SET USE: IM1, IM22
- *public Set(0..1) quantity deduction :*
WCO REFERENCE: 127
DATA SET USE: IM1, IM22
- *public Set(0..1) code dutyRegime :*
WCO REFERENCE: 164
DATA SET USE: IM1, IM12, IM22, EX1, EX2
- *public Set(0..1) quantity specificTaxBase :*
WCO REFERENCE: 129
DATA SET USE: IM1, IM12, IM22, EX1, EX2
- *public Set(0..1) rate tax :*
WCO REFERENCE: 115
DATA SET USE: IM1, IM12, IM22, EX1, EX2
- *public Set(0..1) code type :*
WCO REFERENCE: 113
DATA SET USE: IM1, IM12, IM22, EX1, EX2, CONV

38. "EntryCustomsOffice" class

1. Description

WCO REFERENCE: 046
DATA SET USE: IM1, IM22

Parent classes :

- *Location*

39. "EquipmentIdentification" class

1. Description

Attributes :

- *public identifier identification :*
WCO REFERENCE: 159
DATA SET USE: IM1, IM12, IM22, EX1, EX12, EX22, CRI, CRE, CONV, TRT

40. "ExaminationPlace" class

1. Description

WCO REFERENCE: 086
DATA SET USE: IM1, IM12, CRE, TRT

Parent classes :

- Location

41. "ExitCustomsOffice" class

1. Description

WCO REFERENCE: 047
DATA SET USE: IM1, IM22, EX1, EX22, CRI, CRE

Parent classes :

- Location

42. "Exporter" class

1. Description

WCO REFERENCE: 041
DATA SET USE: IM1, IM12, IM22, EX1, EX12, EX22

WCO REFERENCE: 042
DATA SET USE: IM1, IM12, IM22, EX1, EX12, EX22

Parent classes :

- Party

43. "FreightPayment" class

1. Description

Attributes :

- *public Set(0..1) code method :*

WCO REFERENCE: 098
DATA SET USE: CRI, CRE

44. "GoodsConsignedPlace" class

1. Description

WCO REFERENCE: 201
DATA SET USE: CRI

WCO REFERENCE: 202
DATA SET USE: CRI, TRT

Parent classes :

- Location

45. "GoodsLocation" class

1. Description

WCO REFERENCE: 077
DATA SET USE: IM1, IM12, IM22, EX1, EX12, TRT

WCO REFERENCE: 078
DATA SET USE: IM1, IM12, IM22, EX1, EX12, CRI, CRE, TRT

Parent classes :

- *Location*

46. "GoodsMeasure" class

1. Description

Attributes :

- *public Set(0..1) measure grossMass :*

WCO REFERENCE: 126
DATA SET USE: IM1, IM12, IM22, EX1, EX22, CRI, CRE, TRT

- *public Set(0..1) measure netNetWeight :*

WCO REFERENCE: 128
DATA SET USE: IM1, IM12, EX1, EX12, TRT

- *public Set(0..1) quantity tarif :*

WCO REFERENCE: 130
DATA SET USE: IM1, IM12, IM22, EX1, EX22, TRT

47. "GoodsPackaging" class

1. Description

WCO REFERENCE: 141
DATA SET USE: IM1, IM12, IM22, EX1, EX12

WCO REFERENCE: 142
DATA SET USE: IM1, IM12, IM22, EX1, EX12

WCO REFERENCE: 144
DATA SET USE: IM1, IM12, IM22, EX1, EX12

Parent classes :

- *Packaging*

48. "GoodsReceiptPlace" class

1. Description

WCO REFERENCE: 054
DATA SET USE: CRI, CRE – only in maritime mode

WCO REFERENCE: 055
DATA SET USE: CRI, CRE – only in maritime mode

Parent classes :

- *Location*

49. "GoodsShipment" class

1. Description

Attributes :

- *public Set(0..1) dateTime departure* :

WCO REFERENCE: 030

DATA SET USE: IM1, IM22, EX1, EX12, EX22,

- *public Set(0..1) date exit* :

WCO REFERENCE: 024

DATA SET USE: IM1, IM22, EX1, EX22

- *public Set(0..1) code exportationCountry* :

WCO REFERENCE: 062

DATA SET USE: IM1, IM12, IM22, EX1, EX22,

- *public Set(0..1) code exportationRegion* :

WCO REFERENCE: 088

DATA SET USE: EX1

- *public Set(0..1) numeric sequence* :

WCO REFERENCE: 006

- *public Set(0..1) code transactionNature* :

WCO REFERENCE: 103

DATA SET USE: IM1, IM12, IM22, EX1, EX22

50. "Handling" class

1. Description

Attributes :

- *public Set(0..1) text instruction* :

WCO REFERENCE: 092

DATA SET USE: CRI, CRE

- *public Set(0..1) code instructionsCode* :

WCO REFERENCE: 093

DATA SET USE: CRI, CRE

51. "Importer" class

1. Description

WCO REFERENCE: 039

DATA SET USE: IM1, IM12, IM22, EX1, EX12

WCO REFERENCE: 040

DATA SET USE: IM1, IM12, IM22, EX1, EX12

Parent classes :

- *Party*

52. "IntermediateCarrier" class

1. Description

WCO REFERENCE: 199

DATA SET USE: CRI, CRE

Parent classes :

- *Party*

53. "IntermediateConsignee" class

1. Description

WCO REFERENCE: 200
DATA SET USE: CRI, CRE

Parent classes :

- *Party*

54. "Invoice" class

1. Description

WCO REFERENCE: 018
DATA SET USE: IM1, IM12, IM22, EX1, EX12, EX22

WCO REFERENCE: 005
DATA SET USE: IM1, IM22, EX1, EX22

WCO REFERENCE: 032
DATA SET USE: IM1, IM22, EX1, EX22

Parent classes :

- *Document*

Attributes :

- *public Set(0..1) numeric sequence :*

WCO REFERENCE: 006

55. "InvoiceLine" class

1. Description

Attributes :

- *public Set(0..1) amount itemCharge :*

WCO REFERENCE: 112
DATA SET USE: IM1, IM12, IM22, EX1, EX22

- *public Set(0..1) identifier line :*

WCO REFERENCE: 012
DATA SET USE: IM1, IM22, EX1

56. "Itinerary" class

1. Description

WCO REFERENCE: 043
DATA SET USE: CONV

WCO REFERENCE: 044
DATA SET USE: CONV

Parent classes :

- *Location*

Attributes :

- *public Set(0..1) dateTime arrival :*
WCO REFERENCE: 208
DATA SET USE: CONV
- *public Set(0..1) dateTime departure :*
WCO REFERENCE: 209
DATA SET USE: CONV
- *public Set(0..1) code locationFunction :*
WCO REFERENCE: 251
DATA SET USE: CONV

57. "LoadingLocation" class

1. Description

- WCO REFERENCE: 069
DATA SET USE: IM1, IM12, CRI, TRT
- WCO REFERENCE: 070
DATA SET USE: IM1, IM12, IM22, EX1, EX12, EX22, CRI, CRE

Parent classes :

- *Location*

Attributes :

- *public Set(0..1) date departure :*
WCO REFERENCE: 169
DATA SET USE: EX1, CONV
- *public date loading :*
WCO REFERENCE: 031
DATA SET USE: IM1, IM12

58. "LoadingProofParty" class

1. Description

- WCO REFERENCE: 059
DATA SET USE: EX1

Parent classes :

- *Party*

59. "Location" class

1. Description

Attributes :

- *public Set(0..1) identifier code :*
- *public Set(0..1) name name :*

60. "Manufacturer" class

1. Description

- WCO REFERENCE: 224
DATA SET USE: IM1

WCO REFERENCE: 087
DATA SET USE: IM1, IM22

Parent classes :

- Party

61. "Master" class

1. Description

Attributes :

- *public Set(0..1) date birth :*

WCO REFERENCE: 028
DATA SET USE: CRI, CRE – only for land mode

- *public code nationality :*

WCO REFERENCE: 213
DATA SET USE: CONV

- *public Set(0..1) name name :*

WCO REFERENCE: 081
DATA SET USE: EX1, EX12, EX22, CRI, CRE, CONV

- *public Set(0..1) identifier identification :*

WCO REFERENCE: 217
DATA SET USE: CRI, CRE, CONV

62. "NonVesselOperatingCarrier" class

1. Description

WCO REFERENCE: 214
DATA SET USE: CONV

Parent classes :

- Party

63. "NotifyParty" class

1. Description

Party to be notified

WCO REFERENCE: 057
DATA SET USE: IM1, IM12, IM22, EX1, EX12, CRI, CRE

WCO REFERENCE: 058
DATA SET USE: IM1, IM12, IM22, EX1, EX12, EX22, CRI, CRE

Parent classes :

- Party

64. "ObligationGuarantee" class

1. Description

Attributes :

- *public identifier reference :*

WCO REFERENCE: 100
DATA SET USE: CRI, CRE, TRT

- *public Set(*) code invalidTransitCountry :*
WCO REFERENCE: 232
DATA SET USE: TRT
- *public Set(0..1) code securityDetails :*
WCO REFERENCE: 101
DATA SET USE: IM1, IM22, EX1, EX22, CRI, CRE, TRT

65. "Origin" class

1. Description

Details about the origin of the goods

Attributes :

- *public Set(0..1) code originCountry :*
WCO REFERENCE: 063
DATA SET USE: IM1, IM12, IM22, EX1, EX22, CRI (1)
- *public Set(0..1) code originRegion :*
WCO REFERENCE: 066
DATA SET USE: IM1, IM12, IM22, EX1, EX22 (1)

66. "Packaging" class

1. Description

Attributes :

- *public Set(0..10) identifier markNumber :*
- *public Set(0..1) quantity quantity*
- *public Set(0..1) code type :*

67. "Party" class

1. Description

Associations :

- *undefined : (0-*) as undefined to Communication (1-1) as undefined*
- *undefined : (0-*) as undefined to Contact (1-1) as undefined*

Attributes :

- *public Set(0..2) name name*
- *public Set(0..1) identifier identity :*

68. "Payment" class

1. Description

Attributes :

- *public Set(0..1) code method :*
WCO REFERENCE: 107
DATA SET USE: IM1, IM22, EX1, EX22
- *public Set(0..1) identifier reference :*
WCO REFERENCE: 014
DATA SET USE: IM1, IM12, IM22, EX1, EX22
- *public Set(0..1) amount taxAssessed :*
WCO REFERENCE: 120

DATA SET USE: IM1, IM12, IM22, EX1, EX22, CONV

69. "PreviousCustomsDocument" class

1. Description

WCO REFERENCE: 007
DATA SET USE: IM1, IM12, IM22, EX1, EX12, EX22, CRI, CRE, CONV, TRT

WCO REFERENCE: 186
DATA SET USE: IM1, IM12, IM22, EX1, EX12, EX22, CRI, CRE, CONV, TRT

WCO REFERENCE: 026
DATA SET USE: IM1, IM12, IM22, EX1, EX12, EX22

Parent classes :

- *Document*

Attributes :

- *public Set(0..1) numeric line :*

WCO REFERENCE: 171
DATA SET USE: IM22

70. "ProcessingEstablishment" class

1. Description

WCO REFERENCE: 222
DATA SET USE: IM1, IM12

WCO REFERENCE: 223
DATA SET USE: IM1, IM12

Parent classes :

- *Party*

71. "RepresentativePerson" class

1. Description

Attributes :

- *public Set(0..1) text contactFunction :*

WCO REFERENCE: 248
DATA SET USE: IM1, IM12, IM22, EX1, EX12, EX22, CRI, CRE, CONV, TRT

- *public Set(0..1) name name :*

WCO REFERENCE: 256
DATA SET USE: IM1, IM12, IM22, EX1, EX12, EX22, CRI, CRE, CONV, TRT

72. "Seller" class

1. Description

WCO REFERENCE: 075
DATA SET USE: IM1, IM12, IM22, EX1

WCO REFERENCE: 076
DATA SET USE: IM1, IM12, IM22

Parent classes :

- Party

73. "Stevedore" class

1. Description

WCO REFERENCE: 237
DATA SET USE: CONV

Parent classes :

- Party

74. "StuffingEstablishment" class

1. Description

WCO REFERENCE: 067
DATA SET USE: EX1

WCO REFERENCE: 068
DATA SET USE: EX1

Parent classes :

- Party

Attributes :

- *public Set(0..1) date stuffing :*

WCO REFERENCE: 025
DATA SET USE: EX1

75. "TradeTerm" class

1. Description

Attributes :

- *public Set(0..1) code condition :*

WCO REFERENCE: 090
DATA SET USE: IM1, IM12, IM22, EX1, EX22

- *public code countryRelationship :*

WCO REFERENCE: 106
DATA SET USE: IM1, EX1

- *public Set(0..1) text description :*

WCO REFERENCE: 089
DATA SET USE: IM1, IM22, EX1, EX22

- *public Set(0..1) identifier location :*

WCO REFERENCE: 038
DATA SET USE: IM1, IM22, EX1, EX22

- *public Set(0..1) text locationName :*

WCO REFERENCE: 037
DATA SET USE: IM1, IM22, EX1, EX22

76. "TransshipmentLocation" class

1. Description

WCO REFERENCE: 083
DATA SET USE: IM1, IM12, CRI, CRE

WCO REFERENCE: 084
DATA SET USE: IM1, IM12, CRI, CRE

Parent classes :

- *Location*

77. "TransitCustomsOffice" class

1. Description

WCO REFERENCE: 048
DATA SET USE: CRI, TRT

Parent classes :

- *Location*

78. "TransitDestination" class

1. Description

WCO REFERENCE: 174
DATA SET USE: CRI

WCO REFERENCE: 182
DATA SET USE: CRI, TRT

Parent classes :

- *Location*

79. "TransitPrincipal" class

1. Description

WCO REFERENCE: 073
DATA SET USE: TRT

WCO REFERENCE: 074
DATA SET USE: TRT

Parent classes :

- *Party*

80. "TransitControl" class

1. Description

Attributes :

- *public Set(0..1) code result* :

WCO REFERENCE: 235
DATA SET USE: TRT

- *public Set(0..1) date limit* :
WCO REFERENCE: 264
DATA SET USE: TRT
- *public Set(0..1) quantity day* :
WCO REFERENCE: 027
DATA SET USE: CRI

81. "TransportContractDocument" class

1. Description

- WCO REFERENCE: 015
DATA SET USE: IM1, IM12, IM22, EX1, CRI, CRE
- WCO REFERENCE: 250
DATA SET USE: IM1, IM12, IM22, EX1, CRI, CRE
- WCO REFERENCE: 033
DATA SET USE: IM1
- WCO REFERENCE: 203
DATA SET USE: CRI
- WCO REFERENCE: 099
DATA SET USE: CRI, CONV
- WCO REFERENCE: 198
DATA SET USE: CRI

Parent classes :

- *Document*

Attributes :

- *public Set(0..1) code condition* :
WCO REFERENCE: 091
DATA SET USE: CRI -I only maritime mode

82. "TransportEquipment" class

1. Description

Attributes :

- *public Set(0..1) code characteristic* :
WCO REFERENCE: 152
DATA SET USE: CRI, CRE, CONV
- *public Set(0..1) code fullness* :
WCO REFERENCE: 154
DATA SET USE: CRI, CRE, CONV
- *public Set(0..1) code legalStatus* :
WCO REFERENCE: 157
DATA SET USE: CRI, CRE – (CRI only maritime mode)
- *public Set(0..*) identifier seal* :
WCO REFERENCE: 165
DATA SET USE: EX1, EX12, CRI, CRE, CONV TRT
Also includes Seal Agency, coded

public Set(0..1) code supplierPartyType :
WCO REFERENCE: 151
DATA SET USE: CRI only maritime mode

83. "TransportMeans" class

1. Description

Attributes :

- *public Set(0..1) text identification :*
- *public Set(0..1) identifier identity :*
- *public Set(0..1) code modeAndType :*
- *public Set(0..1) identifier registrationNationality :*

84. "TransportMeansOperator" class

1. Description

WCO REFERENCE: 197
DATA SET USE: CONV

Parent classes :

- *Party*

85. "TransportMeansOwner" class

1. Description

WCO REFERENCE: 196
DATA SET USE: CONV

Parent classes :

- *Party*

86. "UnloadingLocation" class

1. Description

WCO REFERENCE: 079
DATA SET USE: CRE, CONV - CRE only maritime mode

WCO REFERENCE: 080
DATA SET USE: IM1, IM12, IM22, EX1, CRI, CRE, CONV

Parent classes :

- *Location*

Attributes :

- *public Set(0..1) date arrival :*

WCO REFERENCE: 173
DATA SET USE: IM1, IM12, CRI, CRI only for maritime mode)

87. "UCR" class

1. Description

Attributes :

- *public identifier identification* :

WCO REFERENCE: 016
DATA SET USE: IM1, IM12, IM22, EX1, EX12, EX22, CRI, CRE, TRT

- *public Set(0..1) identifier traderReference* :

WCO REFERENCE: 009
DATA SET USE: IM1, IM12, IM22, EX1, EX12, EX22, CRI, CRE, CONV

88. "UNDGContact" class

1. Description

WCO REFERENCE: 045
DATA SET USE: CRI, CRE

89. "ValuationAdjustment" class

1. Description

Attributes :

- *public Set(0..1) indicator addition* :

WCO REFERENCE: 188
DATA SET USE: IM1, IM22

- *public Set(0..1) percent percentage* :

WCO REFERENCE: 123
DATA SET USE: IM1, IM22

- *public Set(0..1) amount amount* :

WCO REFERENCE: 125
DATA SET USE: IM1, IM22

90. "Warehouse" class

1. Description

Attributes :

- *public Set(0..1) date arrival* :

WCO REFERENCE: 221
DATA SET USE: IM1, IM12

- *public Set(0..1) identifier identification* :

WCO REFERENCE: 053
DATA SET USE: IM1, IM12, IM22, EX1, EX12, EX22